

BV-BRC Test Report

V4. Genome Alignment Viewer

Item to test	Genome Alignment Viewer
URL	https://www.bv-brc.org/view/GenomeAlignment/ARWattam@patricbrc.org/BV-BRC%20Workshop/Genome%20Alignment/Brucella/.Brucella%20genome%20group%20alignment%20alpha%20test/alignment.json
Prerequisite sites	None
Tester(s)	Rebecca Wattam
References	https://www.bv-brc.org/docs/quick_references/services/proteome_comparison_service.html
Test date	7-Feb-22 (original - passed), 10-May-2022 (follow-up - passed)
Test Result	Passed

Overview

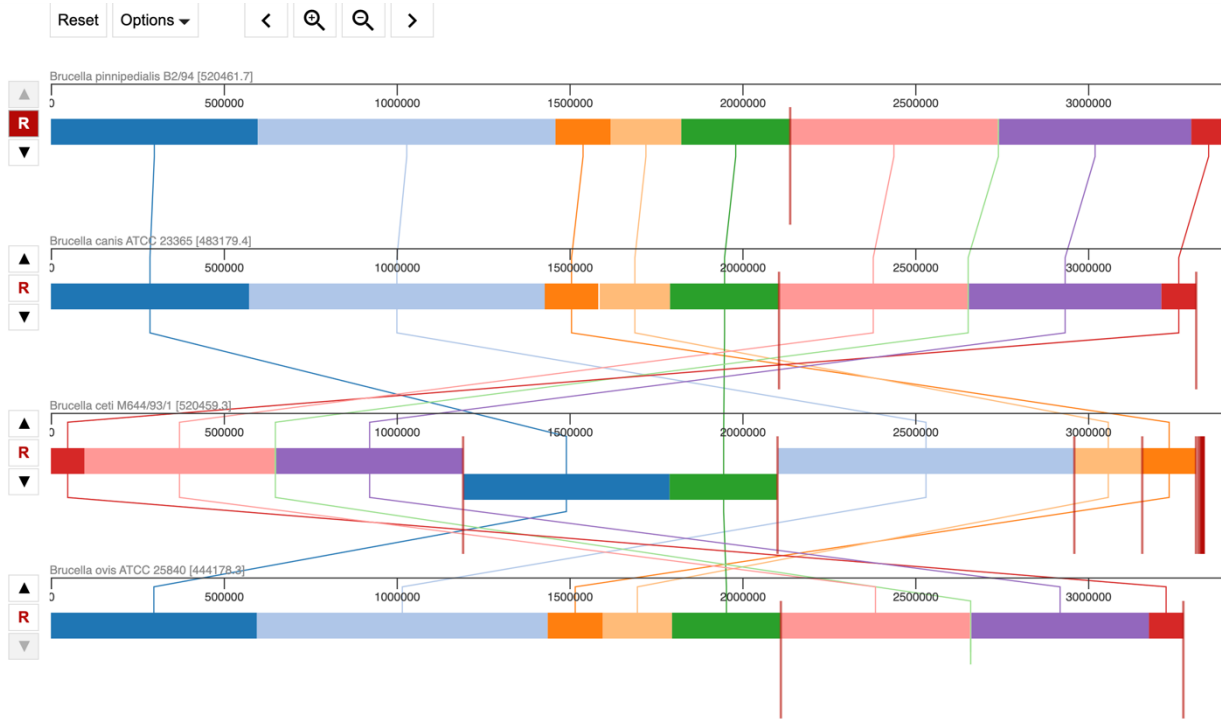
- Test the Genome Alignment Viewer using an example set of bacterial genomes.
- Test zoom.
- Test ordering.
- Test flyovers and links.

Test Results

- Test results were verified by inspection.
- All visualization functions performed as expected.

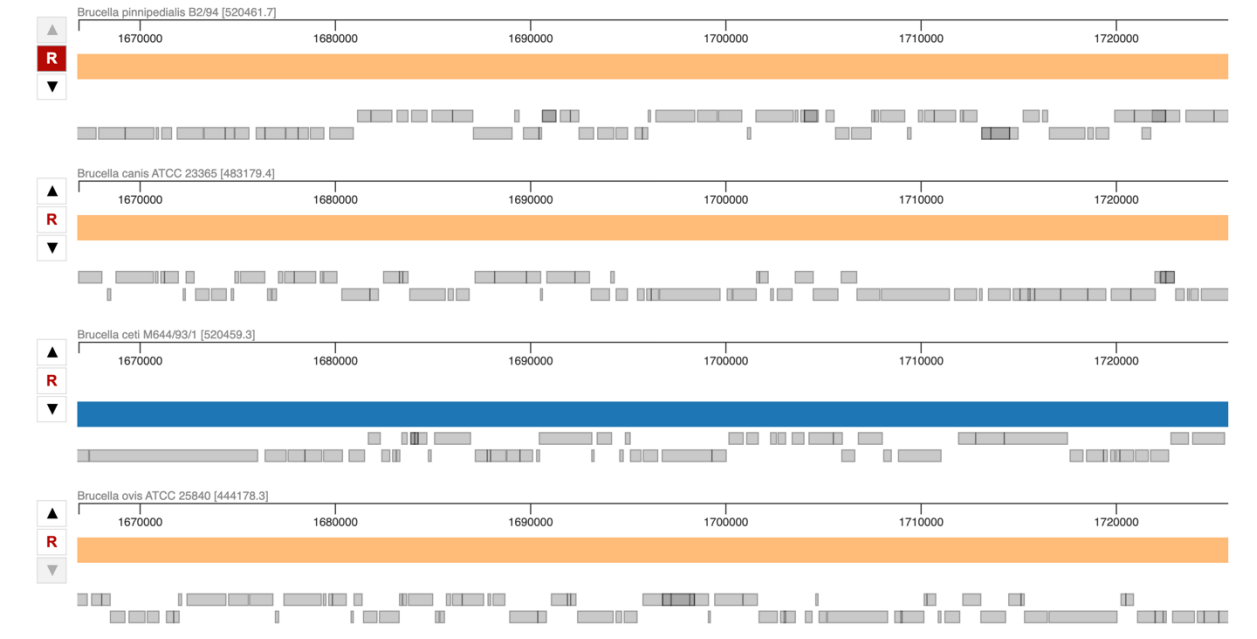
Genome Set: [

Genome ID	Genome Name
444178.3	Brucella ovis ATCC 25840
483179.4	Brucella canis ATCC 23365
520459.3	Brucella ceti M644/93/1
520461.7	Brucella pinnipedialis B2/94



Color coding of segments, rearrangements, deletions, gaps:

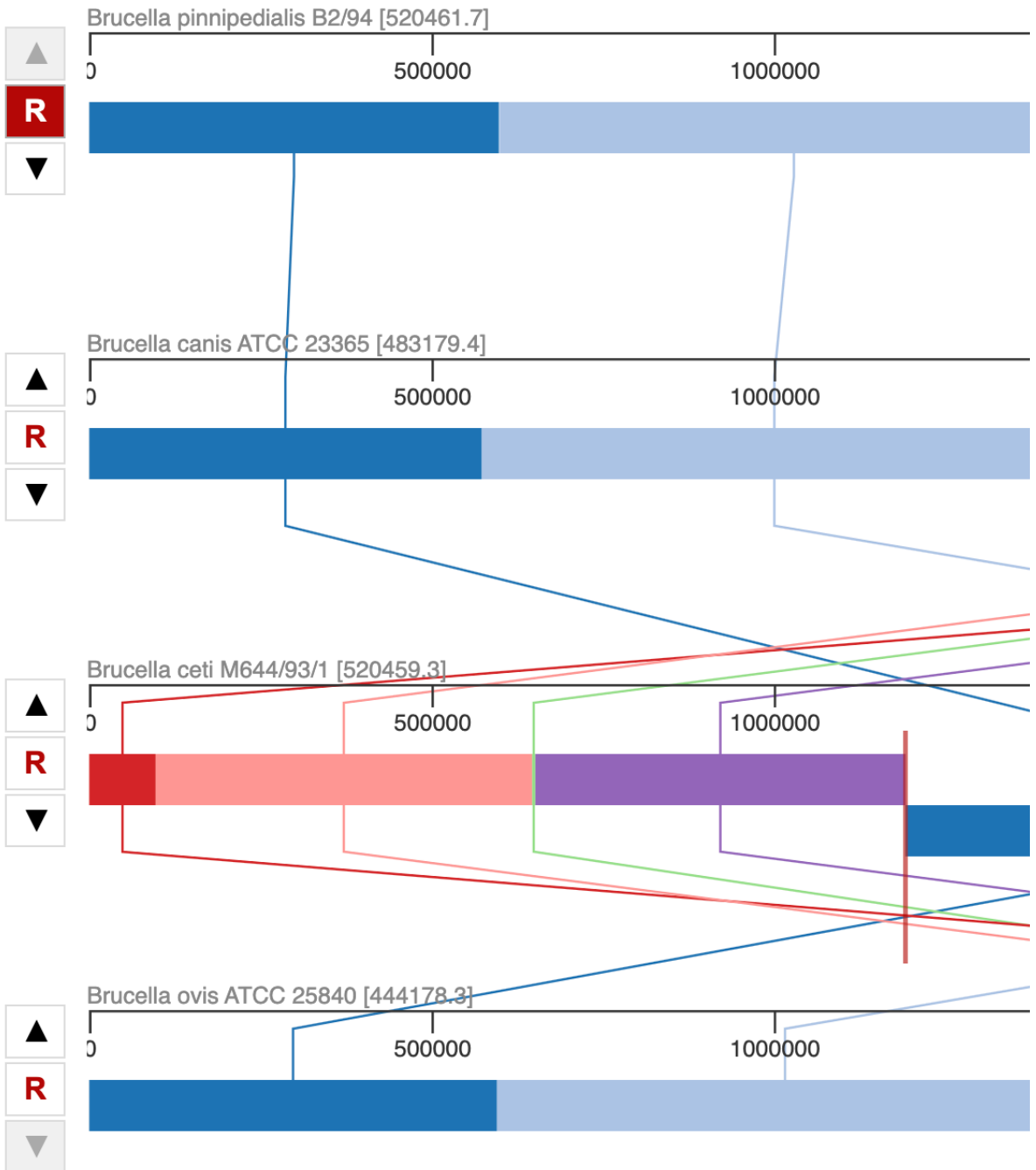
Zoom:



Ordering:

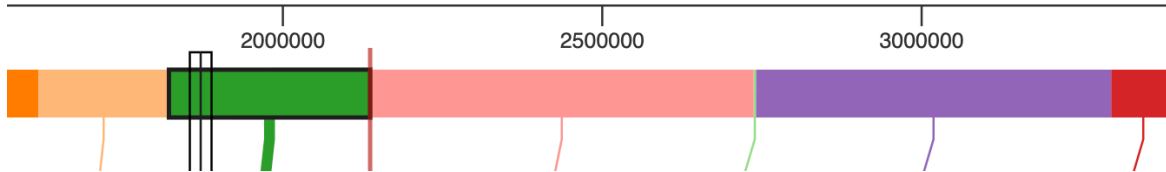
SELECTED GENOMES:

Name	ID	
Brucella pinnipedialis B2/94 [Reference Genome]	520461.7	✘
Brucella canis ATCC 23365	483179.4	✘
Brucella ceti M644/93/1	520459.3	✘
Brucella ovis ATCC 25840	444178.3	✘



Flyovers:

Position	LCB Length	Contig	Contig Length
1873052	314967	CP002078	2138342



Links:

The screenshot shows the BV-BRC website interface. At the top, there is a navigation bar with the BV-BRC logo and menu items: ORGANISMS, SEARCHES, TOOLS & SERVICES, WORKSPACES, and HELP. A search bar contains the text "All Data Types" and "Find a gene, genome, microarray, etc". Below the navigation bar, there is a search interface with a "Reset" button, an "Options" dropdown, and navigation arrows. The main content area displays a genomic map with four tracks. The first track is for *Brucella pinnipedalis* B2/94 [520461.7] and shows a red segment. The second track is for *Brucella canis* ATCC 23365 [483179.4] and shows a blue segment. A tooltip is visible over this track, containing the text: "fig[520461.7.pcg.1733 | BPI_11787 | tkt Transketolase (EC 2.2.1.1) CDS [1696446, 1698437] click for more". The third track is for *Brucella cell* M844/93/1 [520459.3] and shows a blue segment. The fourth track is for *Brucella ovis* ATCC 25840 [444178.3] and shows a red segment. At the bottom right, there is a status bar with "Uploads" and "Jobs" sections, showing 0 uploads, 0 jobs, and 3761 total items.

Feature Summary



fig|520461.7.peg.1733

Genome

Genome ID	520461.7
Genome Name	<i>Brucella pinnipedialis</i> B2/94
Taxon ID	520461

Source

Annotation	PATRIC
Feature Type	CDS

Identifiers

BRC ID	fig 520461.7.peg.1733
---------------	-----------------------

Database Cross References

RefSeq Locus Tag	BPI_I1787
Protein ID	AEK55023.1

Location

Start	1696446
End	1698437
Strand	+
Location	1696446..1698437

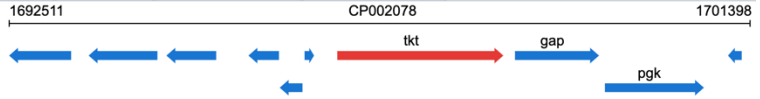
Sequences

NA Length	1992
AA Length	663
NA Sequence	view
AA Sequence	view

Feature View
 Bacteria » Proteobacteria » Alphaproteobacteria » Hyphomicrobiales » Brucellaceae » Brucella » Brucella pinnipedialis » Brucella pinnipedialis B2/94
 fig|520461.7.peg.1733 | BPI_11787 | tkt | Transketolase (EC 2.2.1.1)

Overview Genome Browser Compare Region Viewer Transcriptomics Interactions Domain and Motifs Protein Structures

fig|520461.7.peg.1733



Genome	
Genome ID	520461.7
Genome Name	Brucella pinnipedialis B2/94
Taxon ID	520461
Source	
Annotation	PATRIC
Feature Type	CDS
Identifiers	
BRC ID	fig 520461.7.peg.1733
Database Cross References	
RefSeq Locus Tag	BPI_11787
Protein ID	AEK55023.1
Location	
Start	1696446
End	1698437
Strand	+
Location	1696446..1698437
Sequences	
NA Length	1992

Functional Properties

PATRIC Local Family	PLF_234_00000516
PATRIC Global Family	PGF_01136362
FIGfam	FIG00020289
Identical Proteins	View (new tab)
Identical Genes	View (new tab)
GO Terms	GO:0004802 transketolase activity
EC Numbers	2.2.1.1 Transketolase
Pathways	KEGG:00710 Carbon fixation in photosynthetic organisms KEGG:00030 Pentose phosphate pathway KEGG:01051 Biosynthesis of ansamycins
Subsystems	Pentose phosphate pathway Transketolase (EC 2.2.1.1)

[Submit a request for structure determination to SSGCID](#)